

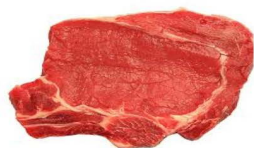
16,8  
Watt/m

IP 20

CRI>94



ta -10°÷ +40°C



A41A24112029



A41A24112030



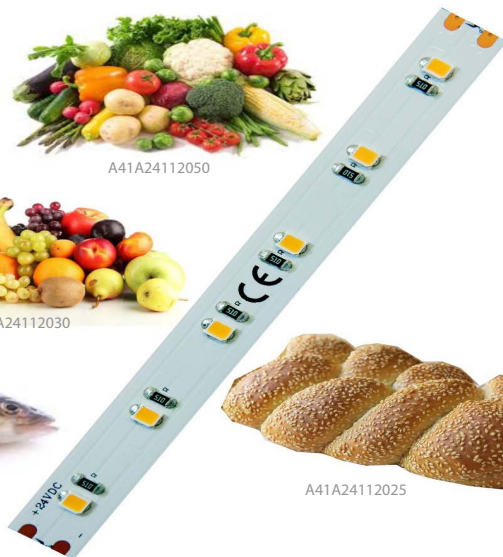
A41A24112050



A41A24112075



A41A24112025



up to  
**110 lm/w**

Part Number	CCT (K)	Lumen/m	LED/m	V (Typ)	Cut	W/m	IP	EEC*
A41A24112025	2500K	1610	112	24V/DC	71,4mm	16,8W	IP20	F
A41A24112029	2900K	1520	112	24V/DC	71,4mm	16,8W	IP20	G
A41A24112030	3000K	1650	112	24V/DC	71,4mm	16,8W	IP20	F
A41A24112050	5000K	1880	112	24V/DC	71,4mm	16,8W	IP20	F
A41A24112075	7500K	1900	112	24V/DC	71,4mm	16,8W	IP20	F

\*\* The EEC specification refers in each case to the installed LED light source(s)



Datasheet download

71,4 mm 112 led/m

10 mm



### **Strisce flessibili a LED 24V autoadesive per alimenti IP20**

- Temperature di colore specifiche per l'illuminazione di alimenti
- 112 led/mt - 16,8W/mt - LED 2835
- Durata superiore nel tempo, adesivo 3M VHB ad alta resistenza
- Temperature di colore disponibili: 2500K (prodotti da forno), 2900K (carni), 3000K (frutta e verdura), 5000K (vegetali verdi), 7500K (pesce)
- Fornite in nastro da 5 m e cavetto di raccordo.

### **24V Flexible adhesive LED strips for food display IP20**

- Specific color temperatures for different food types
- 112 led/mt - 16,8W/mt - LED 2835
- High life time - Fitted with high resistant 3M VHB adhesive tape
- Color temperatures available: 2500K (baked food), 2900K (meat), 3000K (fruit and vegetables), 5000K (for green vegetables) and 7500K (fish)
- Supplied in 5 m reels with connecting cable