



Technical details

Product No.	A41DOBG288xx
Led Q.ty (LEDs/m)	288
Led Type	DOB
Power (W/m)	10
Voltage (V)	24 ±3%
Current (mA/m)	417
CRI (Ra)	≥ 90
Lenght/Reel (m)	5
Water-proof rating	IP20
Beam angle	180°

Non-directional or directional light source:	Non-directional (NDLS)
Mains or non-mains light source:	Non-mains (NMLS)
Dimmable:	Only with specific LED drivers
Cables type:	Silicone 20AWG 35cm black/red (double ended)
Tape type:	3M 9080
Energy rating:	E (EU 2019/2015) *
Pcb material:	COPPER
Pcb colour:	GOLD
Protection against electric shock:	Class III
Version:	Integral
Safety isolating:	See electronic controlgear
Lumen maintenance factor:	96%
Survival factor:	100%
Nominal lifetime LM-80:	L70 B50 >54000 h
Photobiological Safety (Blue light hazard) according to IEC TR 627778:	Risk Exempt (RG0 group)

Lumens per meter

Color Temperature	A41DOBG288xx
2700K	1230 lm
3000K	1240 lm
4000K	1250 lm

- Note: “xx” = “27” (2700K) / “30” (3000K) / “40” (4000K)
- Due to tolerances of the production process and the electrical components, values for light output and electrical power can vary up to 10%.

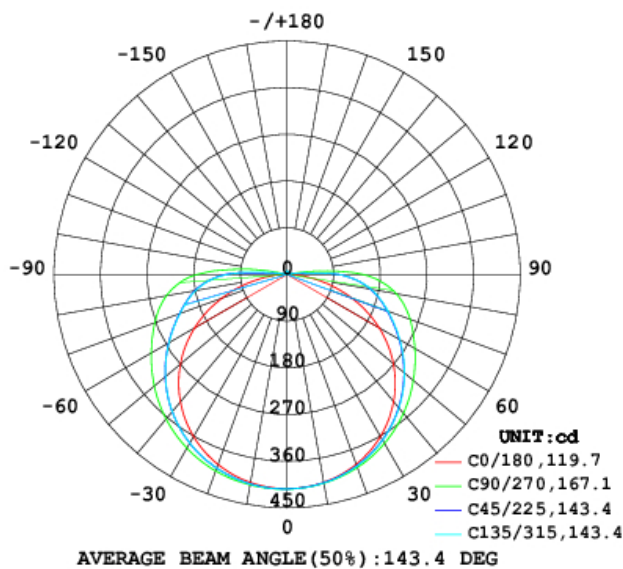
Efficacy

Color Temperature	A41DOBG288xx
2700K	123 lmW
3000K	124 lmW
4000K	125 lmW

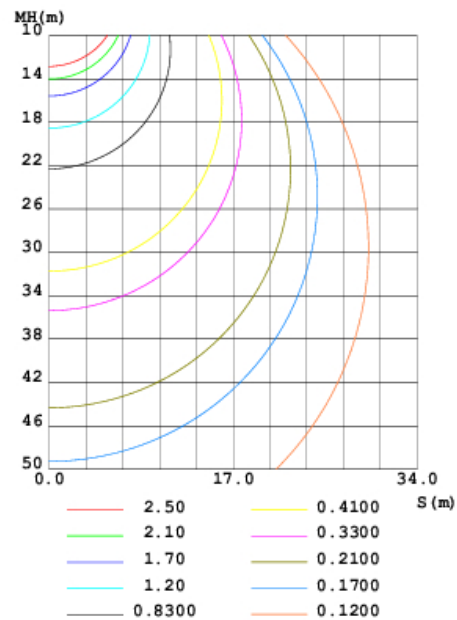
Light distribution

Light Distribution

LUMINOUS INTENSITY DISTRIBUTION DIAGRAM



CO PLANE ISOLUX DIAGRAM (UNIT:lx)

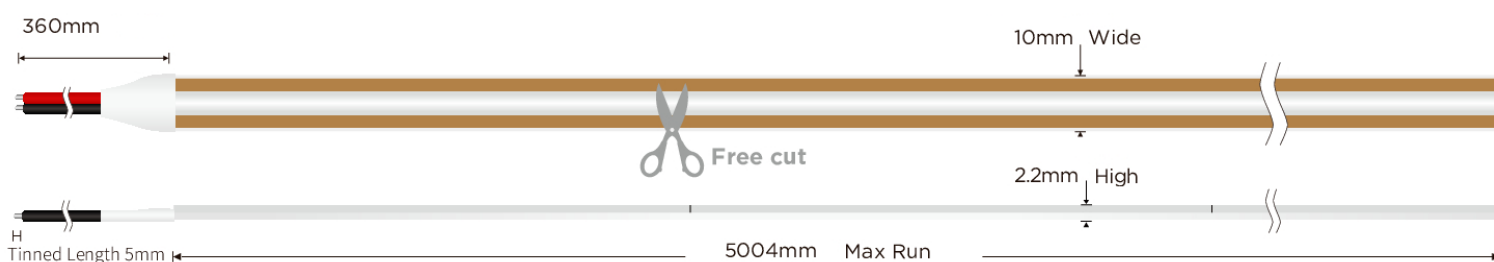


LED STRIPS – DOB – 24V – GOLD – FREE CUT - IP20

Working conditions

Working Temperature (°C)	-20 ÷ 50
Storage Temperature (°C)	-30 ÷ 80
Voltage Range (V dc)	23 ÷ 25
Reverse Voltage (V dc)	25
Reference temperature (Tc)	80° C

Dimensions and cutting



Product weight / 5m reel

A41DOB2428xx	195 gr.
--------------	---------

Energy labelling (EU 2019/2015) and Ecodesign (EU 2019/2020) regulations

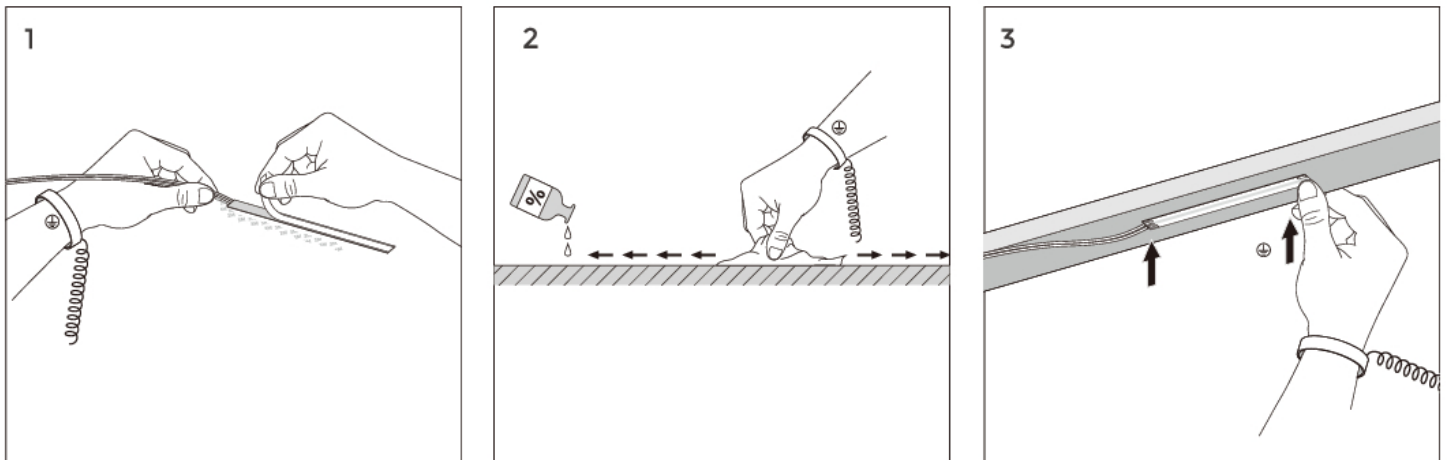
Part Number	N° EPREL	EU 2019/2015 Energy rating	EU 2019/2020 Compliance
A41DOBG28827 – 2700K	2576797	E	COMPLIANT
A41DOBG28830 – 3000K	2576801	E	COMPLIANT
A41DOBG28840 – 4000K	2576804	E	COMPLIANT

The scan of the QR Code on the energy label of the product refers directly to the description of the model in the EPREL (EU Product Database for Energy Labelling) database, where it is possible to download the energy labels and the information sheet of the product.

In alternative, it is possible to access the database using the model registration number (EPREL ID), which you can obtain from the product supplier.

Just insert in the browser the link <https://eprel.ec.europa.eu/screen/product/lightsources/> and add the EPREL ID after the last slash.

Installation



Clean the interested surface with a cloth.

Pull off the 3M tape on the back of the LED strip.

Finally stick the LED strip on the clean surface.

Caution

