



Technical details

Product No.	A41DOB2432TW
Led Q.ty (LEDs/m)	160 + 160
Led Type	DOB
Power (W/M)	7 + 7
Voltage (V)	24 ±3%
Current (mA/M)	0,292
CRI (Ra)	> 90
CCT	2700K÷6500K
Lenght/Reel (M)	5
Beam	180°
Water-proof rating	IP20

Non-directional or directional light source:	Non-directional (NDLS)
Mains or non-mains light source:	Non-mains (NMLS)
Dimmable:	Only with specific LED drivers
Cables type:	PVC 80°C 20AWG lenght 36cm (double ended)
Pcb material:	COPPER
Tape type:	3M 9080
Energy rating:	G (EU 2019/2015) *
Protection against electric shock:	Class III
Version:	Integral
Safety isolating:	See electronic controlgear
Lumen maintenance factor:	96%
Survival factor:	100%
Nominal lifetime LM-80:	L70 B50 >54000 h
Photobiological Safety (Blue light hazard) according to IEC TR 627778:	Risk Exempt (RG0 group)

*Energy class is calculated according to Spectrum test measurements

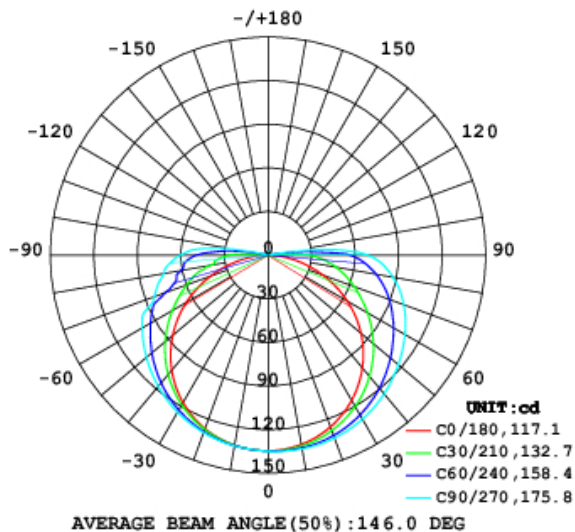
Lumens per meter

Color Temperature	A41DOB2432TW
@2700K	630 lm
@6500K	640 lm

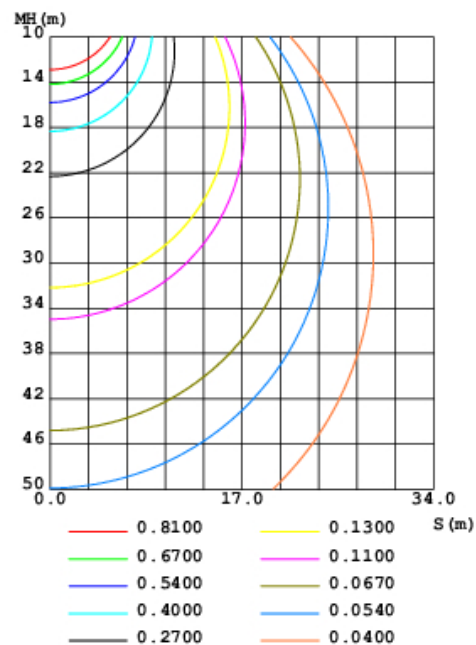
● Due to tolerances of the production process and the electrical components, values for light output and electrical power can vary up to 10%.

Light distribution

LUMINOUS INTENSITY DISTRIBUTION DIAGRAM



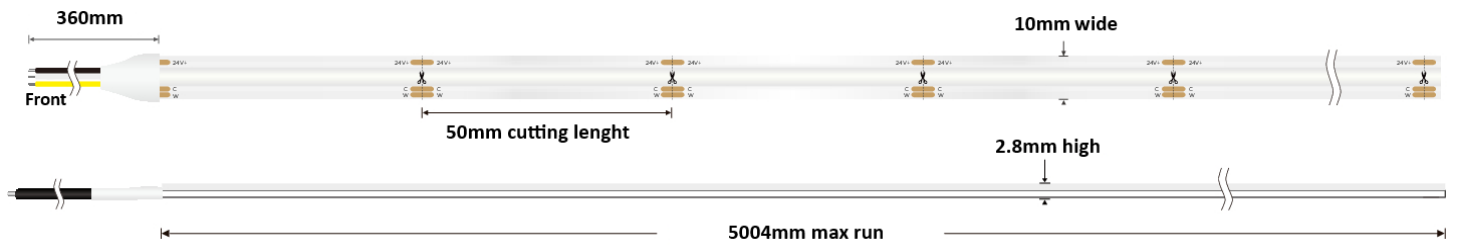
C0 PLANE ISOLUX DIAGRAM (UNIT:lx)



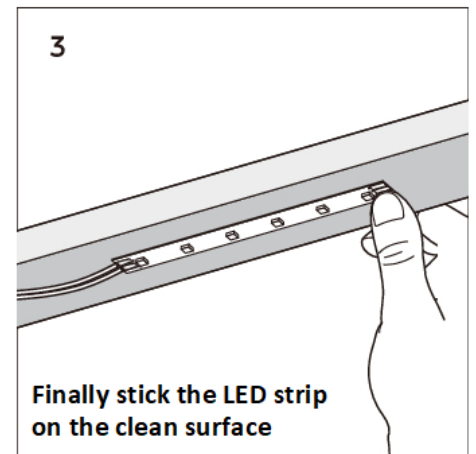
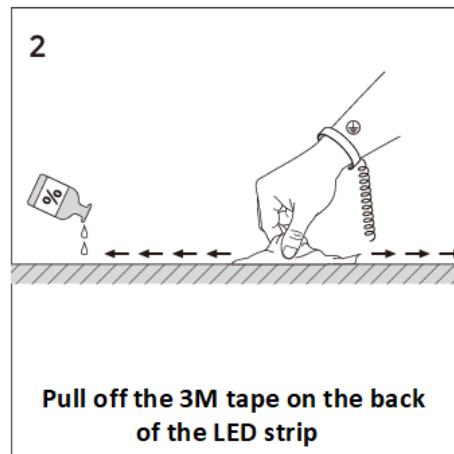
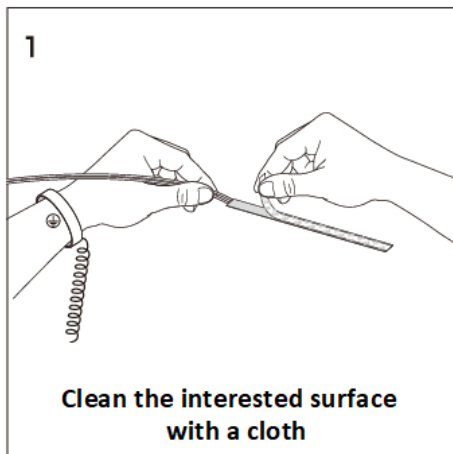
Working conditions

Working Temperature (°C)	-20 ÷ 50
Storage Temperature (°C)	-30 ÷ 80
Voltage Range (Vdc)	23 ÷ 25
Reverse Voltage (Vdc)	25
Reference temperature (Tc)	80° C

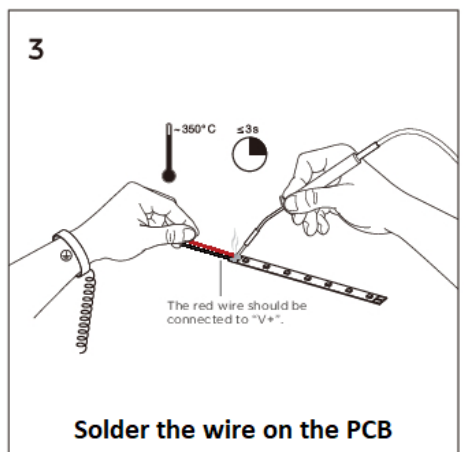
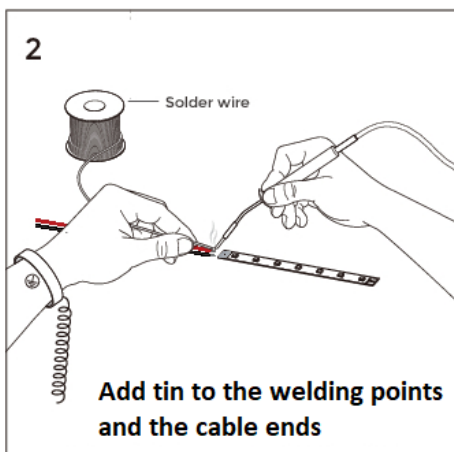
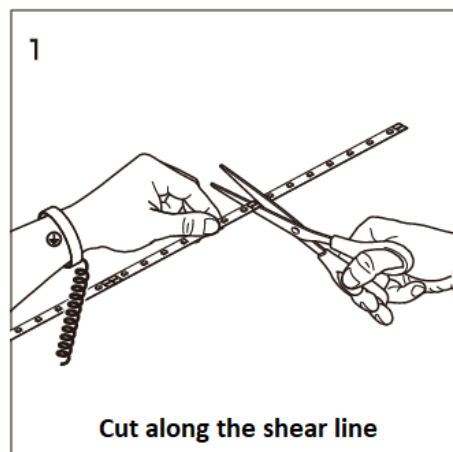
Product dimensions



Installation



Cutting





LED STRIPS – LED DOB – Tunable White – 24V – IP20

Product weight / 5 meters reel

A41DOB2432TW	250 gr.
--------------	---------

Energy labelling (EU 2019/2015) and Ecodesign (EU 2019/2020) regulations

Part Number	N° EPREL	EU 2019/2015 Energy rating	EU 2019/2020 Compliance
A41DOB2432TW	2519291	G	COMPLIANT

The scan of the QR Code on the energy label of the product refers directly to the description of the model in the EPREL (EU Product Database for Energy Labelling) database, where it is possible to download the energy labels and the information sheet of the product.

In alternative, it is possible to access the database using the model registration number (EPREL ID), which you can obtain from the product supplier.

Just insert in the browser the link <https://eprel.ec.europa.eu/screen/product/lightsources/> and add the EPREL ID after the last slash.