

LED STRIPS – 48V LED 2835 – High Efficiency – IP20



Technical details

Product No.	A41H481400xx
Led Q.ty (LEDs/m)	140
Led Type	2835
Power (W/M)	14,4
Voltage (V)	48 ±3%
Current (mA/M)	300
CRI (Ra)	≥ 90
Lenght/Reel (M)	20 (Powered by one side only)
Beam	120°
Water-proof rating	IP20

Non-directional or directional light source:	Non-directional (NDLS)
Mains or non-mains light source:	Non-mains (NMLS)
Dimmable:	Only with specific LED drivers
Cables type:	PVC 80°C 20AWG lenght 36cm (double ended)
Pcb material:	COPPER
Tape type:	3M 9080
Energy rating:	E (EU 2019/2015) *
Protection against electric shock:	Class III
Version:	Integral
Safety isolating:	See electronic controlgear
Lumen maintenance factor:	96%
Survival factor:	100%
Nominal lifetime LM-80:	L70 B50 >54000 h
Photobiological Safety (Blue light hazard) according to IEC TR 62778:	Risk Exempt (RG0 group)

*Energy class is calculated according to Spectrum test measurements

LED STRIPS – 48V LED 2835 – High Efficiency – IP20

Lumens per meter

Color Temperature	A41H481400xx
3000K	1870 lm
4000K	1885 lm

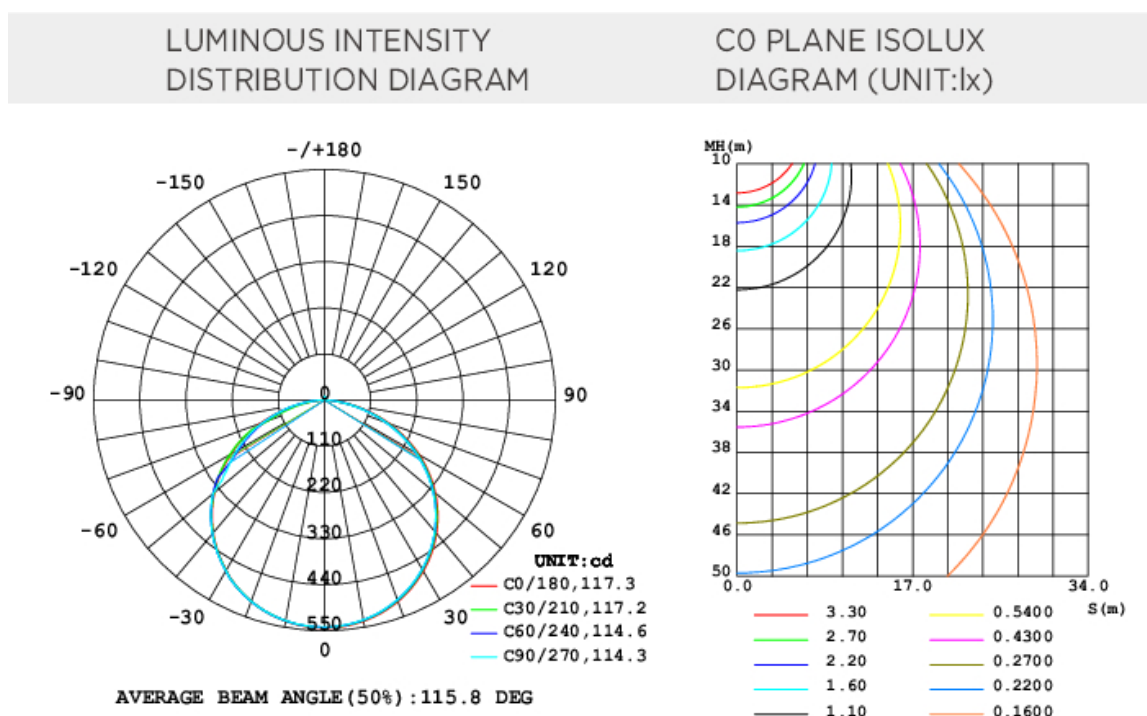
• Due to tolerances of the production process and the electrical components, values for light output and electrical power can vary up to 10%.

Efficacy

Color Temperature	A41H481400xx
3000K	130 lmW
4000K	130 lmW

• Note: "xx"=CCT "30"(3000K)/"40"(4000K)

Light distribution

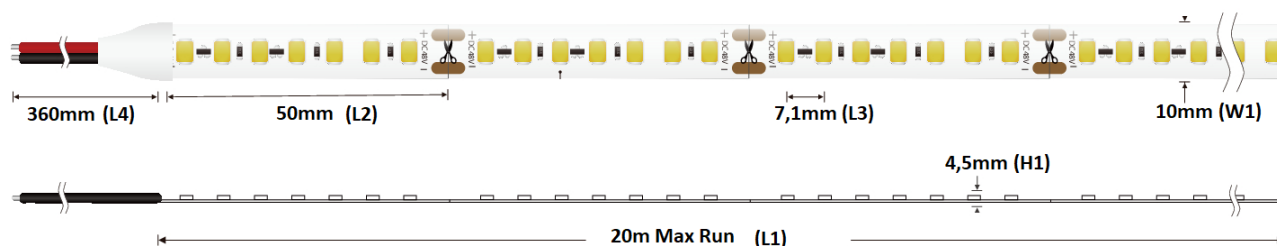


Working conditions

Working Temperature (°C)	-20 ÷ 50
Storage Temperature (°C)	-30 ÷ 80
Voltage Range (Vdc)	47 ÷ 49
Reverse Voltage (Vdc)	49
Reference temperature (Tc)	80° C

LED STRIPS – 48V LED 2835 – High Efficiency – IP20

Dimensions



Dimensions	A41H481400xx	Tolerance
L1(m)	20	± 10
L2(mm)	50 (7 LED)	± 1
L3(mm)	7.1	± 0.2
L4(mm)	360	± 5
W1(mm)	10	± 0.1
H1(mm)	4.5	± 0.1

Product weight / 20m reel

A41H481400xx	330 gr.
--------------	---------

Energy labelling (EU 2019/2015) and Ecodesign (EU 2019/2020) regulations

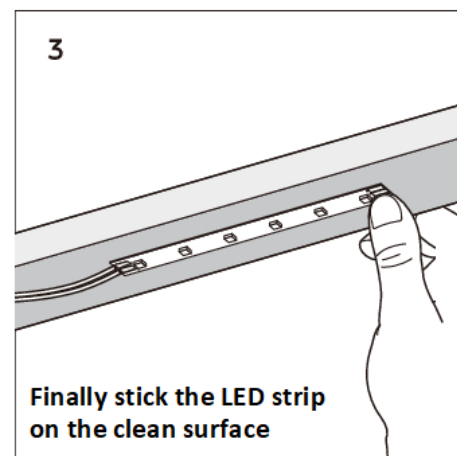
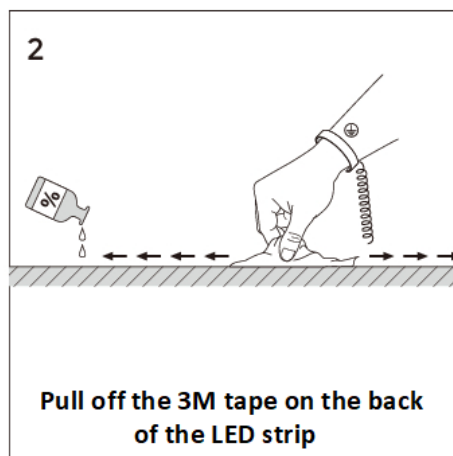
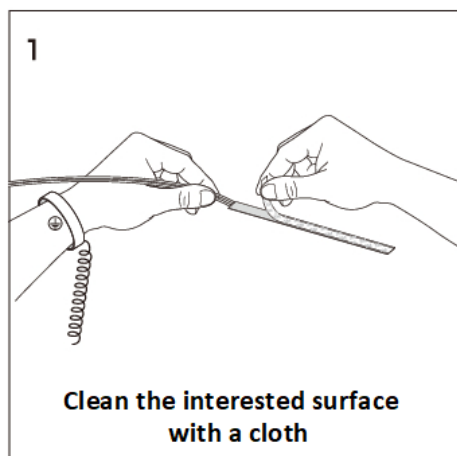
Part Number	N° EPREL	EU 2019/2015 Energy rating	EU 2019/2020 Compliance
A41H48140030 – 3000K	1609488	E	COMPLIANT
A41H48140040 – 4000K	1609501	E	COMPLIANT

The scan of the QR Code on the energy label of the product refers directly to the description of the model in the EPREL (EU Product Database for Energy Labelling) database, where it is possible to download the energy labels and the information sheet of the product.

In alternative, it is possible to access the database using the model registration number (EPREL ID), which you can obtain from the product supplier.

Just insert in the browser the link <https://eprel.ec.europa.eu/screen/product/lightsources/> and add the EPREL ID after the last slash.

Installation



Cutting

