

LED STRIPS – STANDARD – SPI DIGITAL – 24V



- Color change and mixing implemented by controller coding
- LED density 20pixels per meter
- SPI control IC-UCS1903H

Technical details

Product No.	A41SPI1400xx
Led Q.ty (LEDs/m)	120
Led Type	2835
Power (W/M)	14,4
Voltage (V)	24 ±3%
Current (mA/M)	600mA
Lenght/Reel (M)	5
CRI (Ra)	>80
Beam	120°
Water-proof rating	IP20

Non-directional or directional light source:	Non-directional (NDLS)
Mains or non-mains light source:	Non-mains (NMLS)
Dimmable:	Only with specific LED drivers
Cables type:	PVC 80°C 20AWG lenght 28cm (double ended)
Pcb material:	COPPER
Tape type:	3M 9080
Energy rating:	G/F (EU 2019/2015) *
Protection against electric shock:	Class III
Version:	Integral
Safety isolating:	See electronic controlgear
Lumen maintenance factor:	96%
Survival factor:	100%
Nominal lifetime LM-80:	L70 B50 >54000 h
Photobiological Safety (Blue light hazard) according to IEC TR 62778:	Risk Exempt (RG0 group)

LED STRIPS – STANDARD – SPI DIGITAL – 24V

Lumens per meter

Color Temperature	A41SPI1400xx
3000 K	1310 lm
4000 K	1380 lm

● Due to tolerances of the production process and the electrical components, values for light output and electrical power can vary up to 10%.

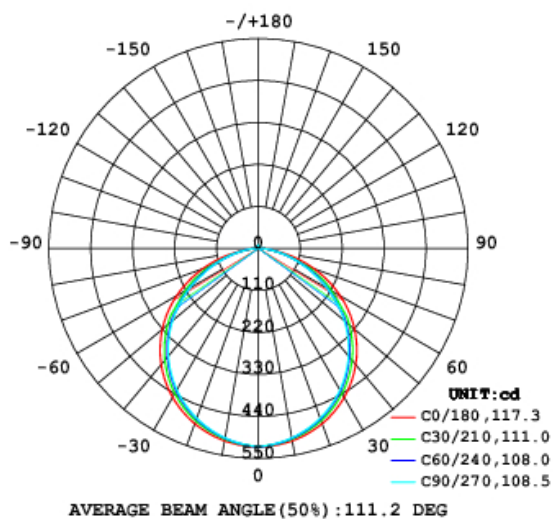
Efficacy

Color Temperature	A41SPI1400xx
3000 K	91 lmW
4000 K	96 lmW

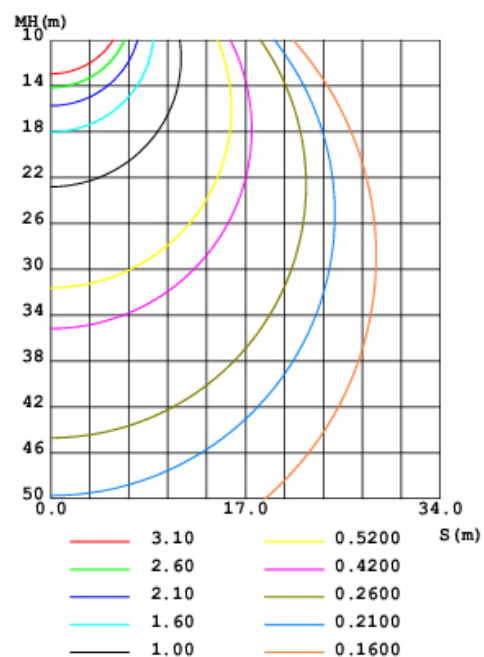
● Note: "xx"=CCT "30"(3000K)/"40"(4000K)

Light distribution

LUMINOUS INTENSITY DISTRIBUTION DIAGRAM



CO PLANE ISOLUX DIAGRAM (UNIT:lx)

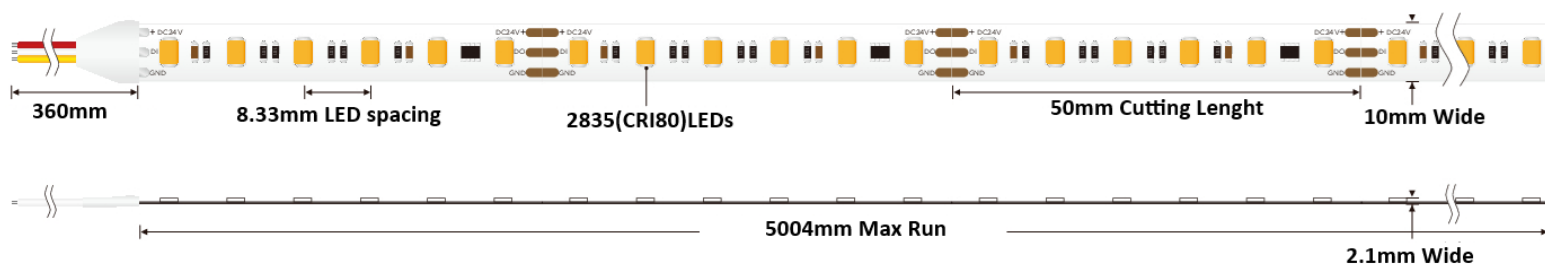


LED STRIPS – STANDARD – SPI DIGITAL – 24V

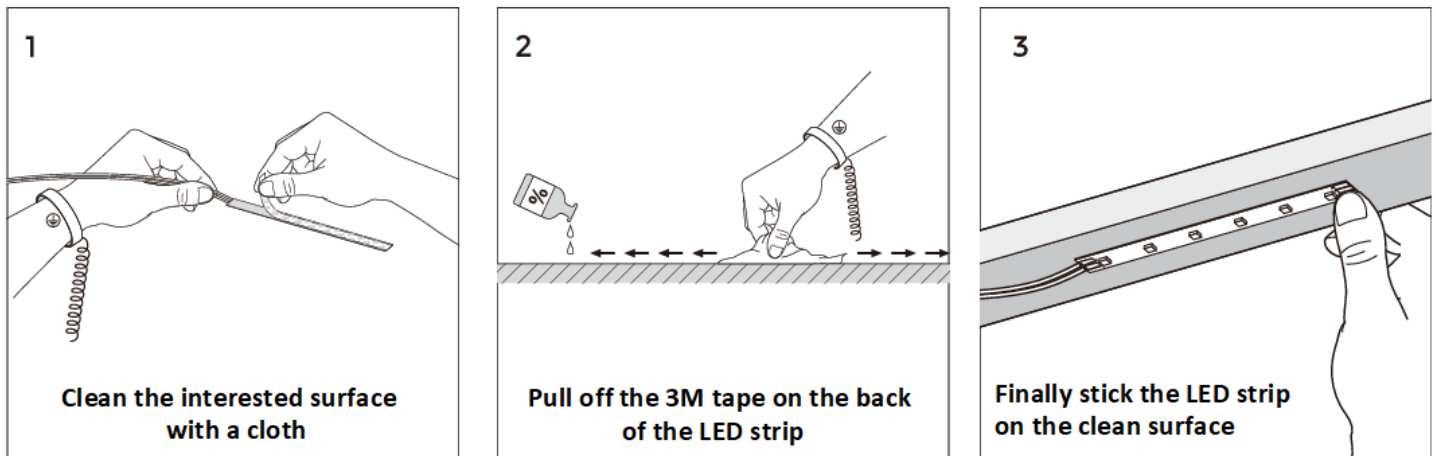
Working conditions

Working Temperature (°C)	-20 ÷ 50
Storage Temperature (°C)	-30 ÷ 80
Voltage Range (Vdc)	23 ÷ 25
Reverse Voltage (Vdc)	25
Reference temperature (Tc)	80° C

Dimensions and cutting



Installation



Product weight / 5m reel

A41SPI1400xx	170 gr.
--------------	---------



LED STRIPS – STANDARD – SPI DIGITAL – 24V

Energy labelling (EU 2019/2015) and Ecodesign (EU 2019/2020) regulations

Part Number	N° EPREL	EU 2019/2015 Energy rating	EU 2019/2020 Compliance
A41SPI140030	2617436	G	COMPLIANT
A41SPI140040	2617439	F	COMPLIANT

The scan of the QR Code on the energy label of the product refers directly to the description of the model in the EPREL (EU Product Database for Energy Labelling) database, where it is possible to download the energy labels and the information sheet of the product.

In alternative, it is possible to access the database using the model registration number (EPREL ID), which you can obtain from the product supplier.

Just insert in the browser the link <https://eprel.ec.europa.eu/screen/product/lightsources/> and add the EPREL ID after the last slash.