



- Color change and mixing implemented by controller coding
- LED density 14pixels per meter
- SPI control IC-WS2814

Technical details

Product No.	A41SPIC21RW3
Led Q.ty (LEDs/m)	784
Led Type	COB
Power (W/M)	21
Voltage (V)	24 ±3%
Current (mA/M)	875mA
Lenght/Reel (M)	5
Beam	120°
Water-proof rating	IP20

Non-directional or directional light source: Mains or non-mains light source: Dimmable: Cables type: Pcb material: Tape type: Energy rating: Protection against electric shock: Version: Safety isolating: Lumen maintenance factor: Survival factor: Nominal lifetime LM-80: Photobiological Safety (Blue light hazard) according to IEC TR 627778:	Non-directional (NDLS) Non-mains (NMLS) Only with specific LED drivers PVC 80°C 20AWG lenght 36cm (double ended) COPPER 3M 9080 G (EU 2019/2015) * Class III Integral See electronic controlgear 96% 100% L70 B50 >54000 h Risk Exempt (RG0 group)
---	--

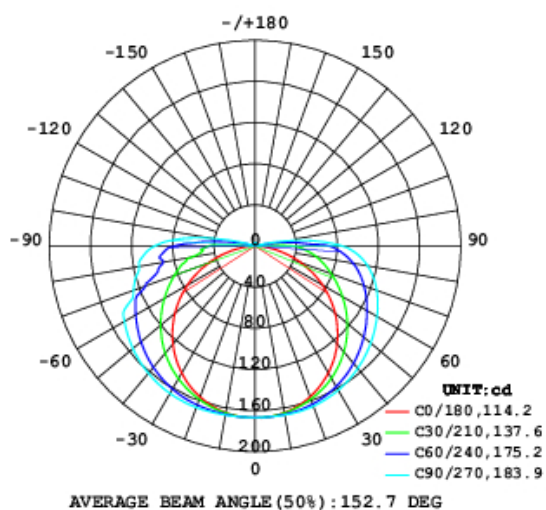
Lumens per meter

Color Temperature	A41SPIC21RW3
WHITE 3000K	260 lm
RED	70 lm
GREEN	330 lm
BLUE	60 lm
RGB+W	910 lm

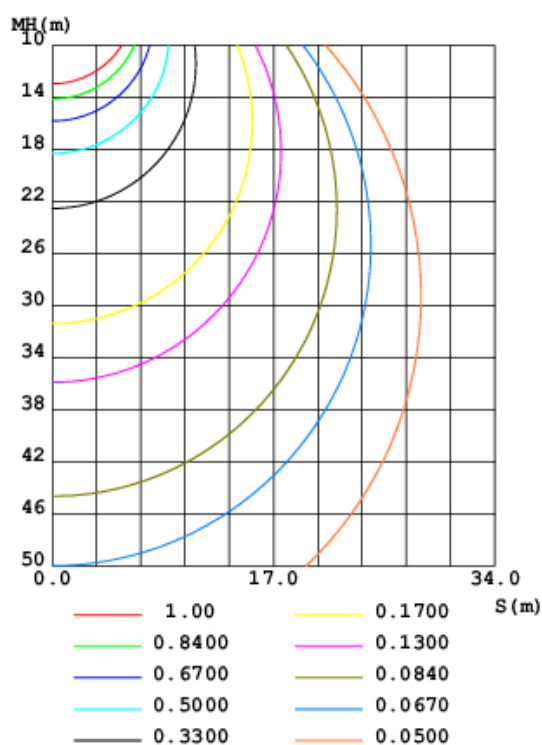
● Due to tolerances of the production process and the electrical components, values for light output and electrical power can vary up to 10%.

Light distribution

LUMINOUS INTENSITY DISTRIBUTION DIAGRAM



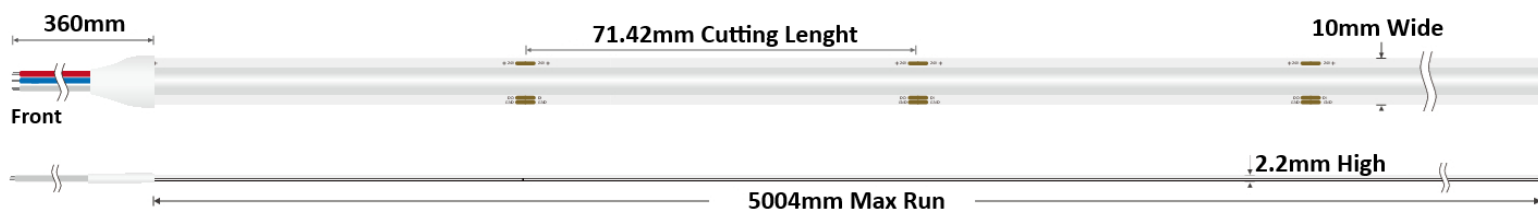
CO PLANE ISOLUX DIAGRAM (UNIT:lx)



Working conditions

Working Temperature (°C)	-20 ÷ 50
Storage Temperature (°C)	-30 ÷ 80
Voltage Range (Vdc)	23 ÷ 25
Reverse Voltage (Vdc)	25
Reference temperature (Tc)	80° C

Dimensions and cutting

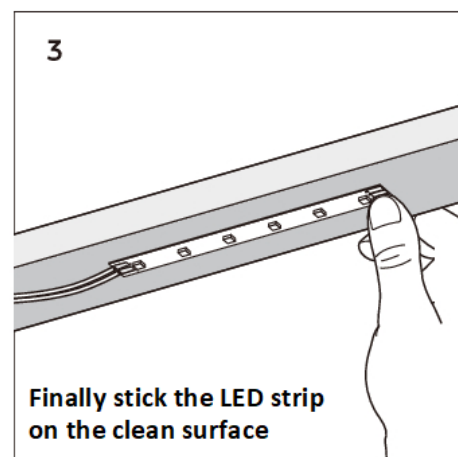
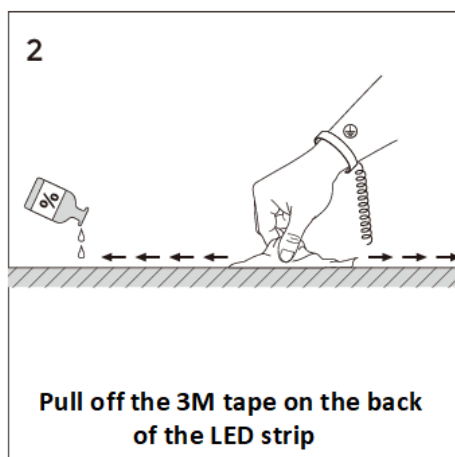
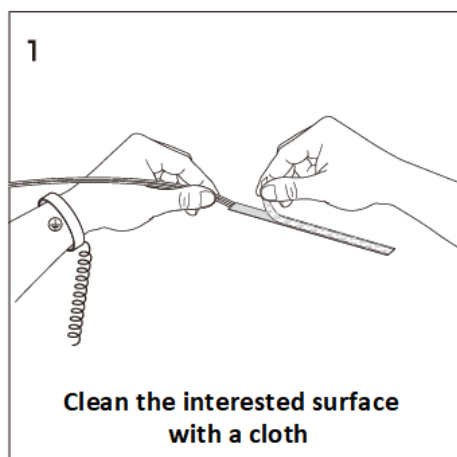


Product weight / 5m reel

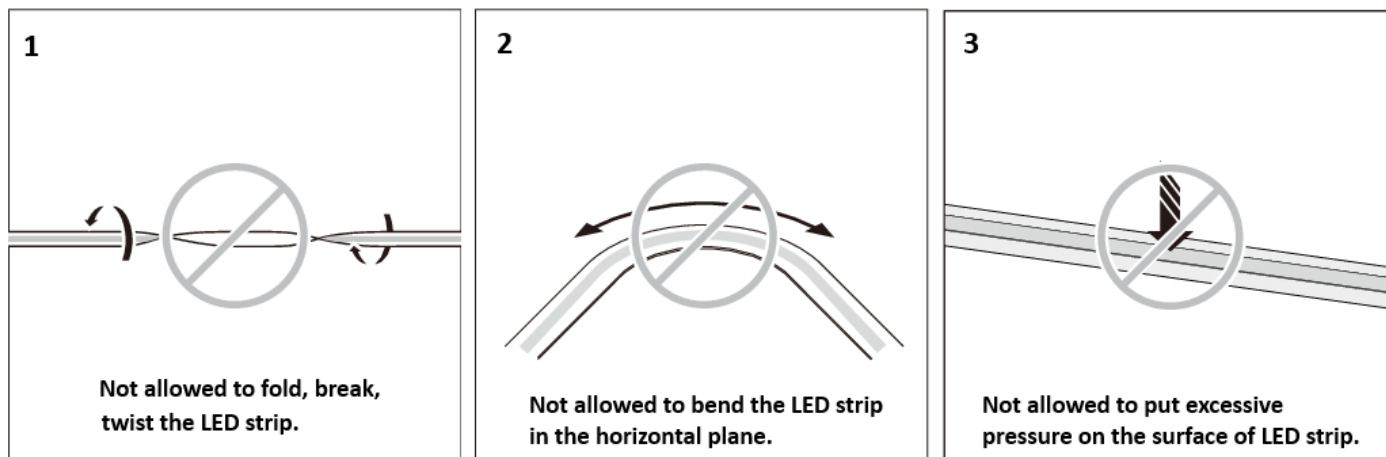
A41SPIC21RW3

165 gr.

Installation



Cautions



Energy labelling (EU 2019/2015) and Ecodesign (EU 2019/2020) regulations

Part Number	N° EPREL	EU 2019/2015 Energy rating	EU 2019/2020 Compliance
A41SPIC21RW3	2619930	G	COMPLIANT

The scan of the QR Code on the energy label of the product refers directly to the description of the model in the EPREL (EU Product Database for Energy Labelling) database, where it is possible to download the energy labels and the information sheet of the product.

In alternative, it is possible to access the database using the model registration number (EPREL ID), which you can obtain from the product supplier.

Just insert in the browser the link <https://eprel.ec.europa.eu/screen/product/lightsources/> and add the EPREL ID after the last slash.