

- Color change and mixing implemented by controller coding
- LED density 20pixels per meter
- SPI control IC-UCS1903H

**Technical details**

<b>Product No.</b>	<b>A41SPIN120xx</b>
Led Q.ty (LEDs/m)	120
Led Type	2835
Power (W/m)	12
Voltage (V)	24 ±3%
Current (mA/m)	500
CRI (Ra)	≥ 90
Lenght/Reel (m)	5
Water-proof rating	IP67
Beam angle	120°

Non-directional or directional light source:	Non-directional (NDLS)
Mains or non-mains light source:	Non-mains (NMLS)
Dimmable:	Only with specific LED drivers
Cables type:	3x0,5mm <sup>2</sup> grey (double ended)
Pcb material:	COPPER
Protection against electric shock:	Class III
Version:	Integral
Safety isolating:	See electronic controlgear
Lumen maintenance factor:	96%
Survival factor:	100%
Nominal lifetime LM-80:	L70 B50 >54000 h
Photobiological Safety (Blue light hazard) according to IEC TR 62778:	Risk Exempt (RG0 group)

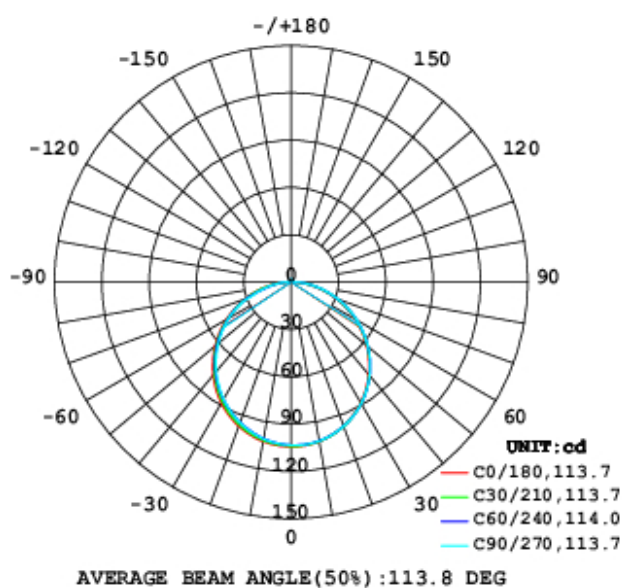
## Lumens per meter

Color Temperature	A41SPIN120xx
3000K	250 lm
4000K	290 lm

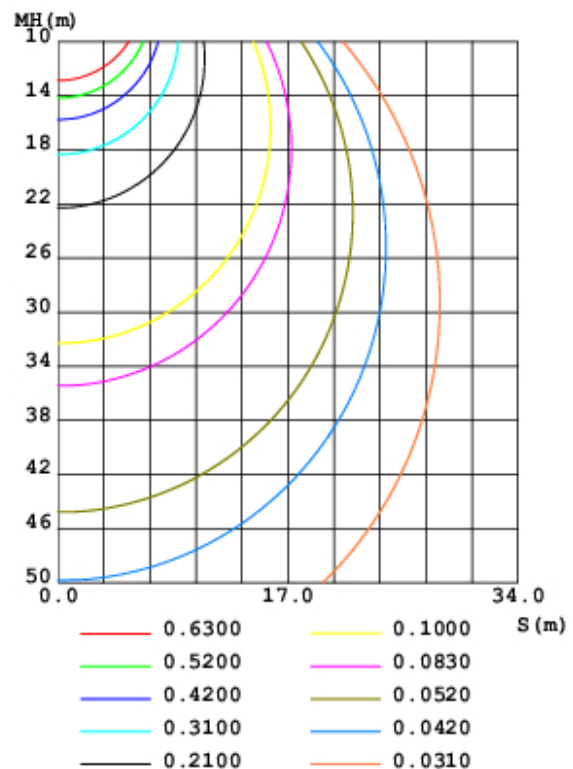
- Note: “xx” = 30” (3000K) / “40” (4000K)
- Due to tolerances of the production process and the electrical components, values for light output and electrical power can vary up to 10%.

## Light distribution

LUMINOUS INTENSITY DISTRIBUTION DIAGRAM



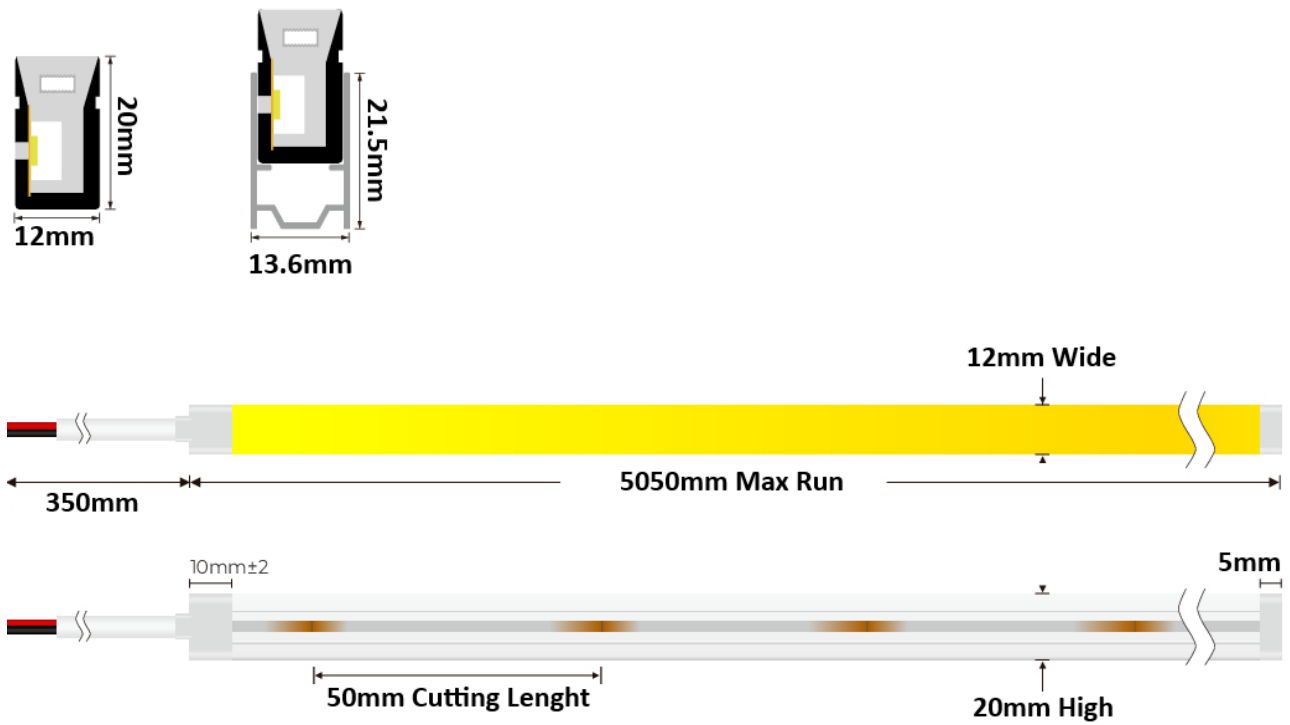
C0 PLANE ISOLUX DIAGRAM (UNIT:lx)



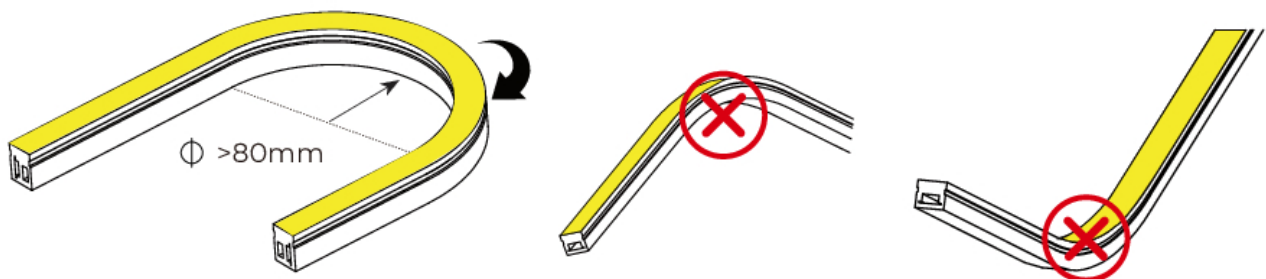
## Working conditions

Working Temperature (°C)	-25 ÷ 60
Storage Temperature (°C)	-30 ÷ 80
Voltage Range (V dc)	23 ÷ 25
Reverse Voltage (V dc)	25
Reference temperature (Tc)	80° C

Dimensions and cutting



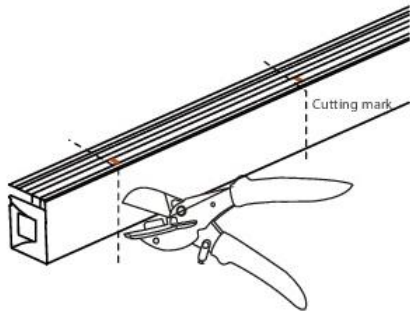
Correct bending way



## Installation

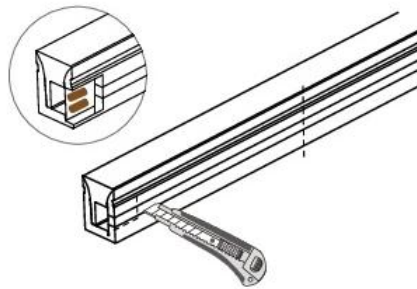
### Cutting

- ① Cut the NEON strip at the required length



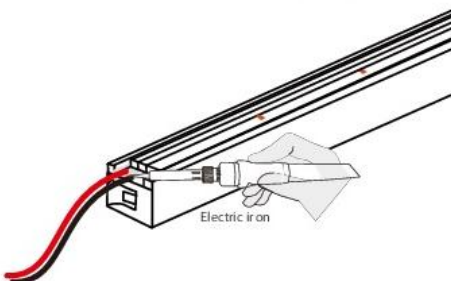
⚠ Cut at cutting mark only

- ② Cut the side of NEON strip exposing the soldering pad

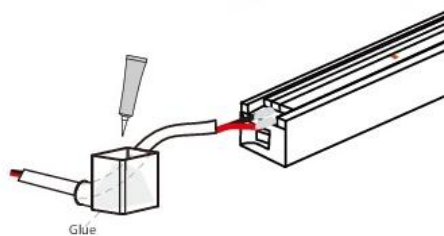


### Soldering

- ① Solder cable wires on pcb pads



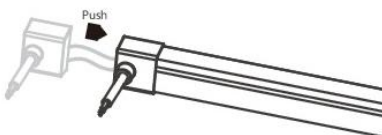
- ② Put the wire through the end cap and inject glue



⚠ Optimum glue quantity between 1/3-1/2 of end cap capacity

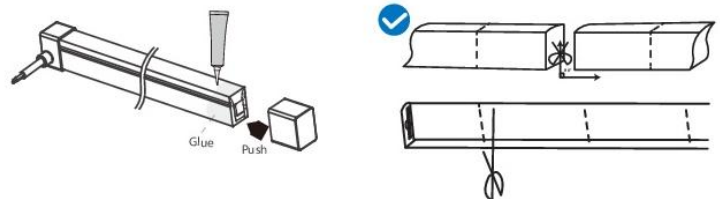
### Installing end cap

- ① Push the end cap and wrap it around end of NEON strip



After the glue is injected, the NEON strip needs to be laid flat for 2 hours minimum before further processing

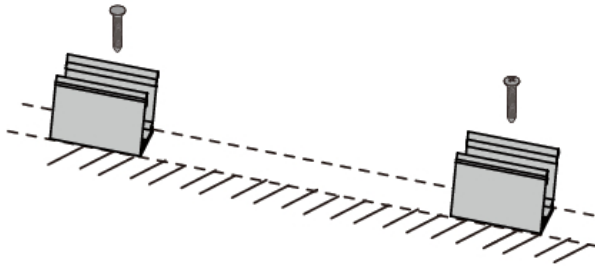
- ② Apply gel around the tail of NEON strip and install the end cap



⚠ After the glue is injected, the NEON strip needs to be laid flat for 2 hours minimum before project process. Glue will be completely dry after 24 hours.

### Clip or aluminum profile

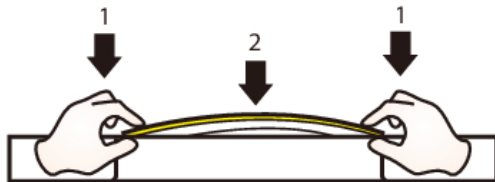
Fix the clips and the aluminum profile using the screws



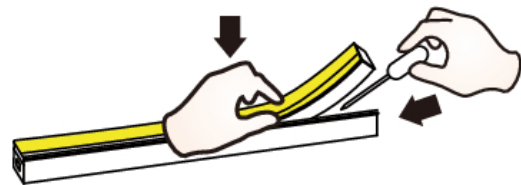
⚠ Suggestion: 2 clips per meter

### NEON strip

Simultaneously install the NEON strip from both ends



Use appropriate tools when removing the NEON strip







### Product weight / 5m reel

A41SPIN120xx	1300 gr.
--------------	----------

## LED STRIPS – NEON – SPI DIGITAL – WHITE – IP67

### Accessories (supplied with the reel)

#### A41KITSPIN00

	Front cap with hole (x 2)
	End cap without hole (x 4)
	Screw (x 10)
	Glue + glue nozzle (x 2)