

2,2  
Watt



IP 43

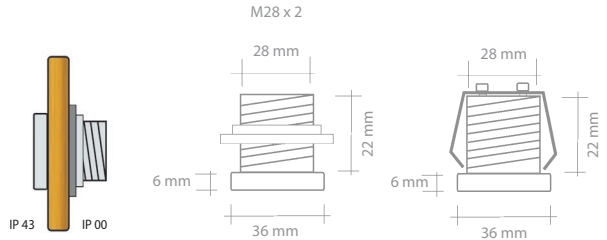
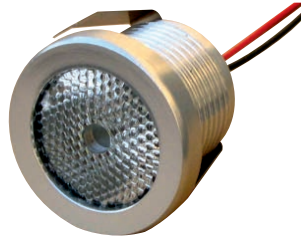
CRI > 80



EMC



t<sub>a</sub> -20° ÷ +40°C



Part Number	CCT (K)	Lumen Typ.	Beam	Lux @1m	I (Typ)	V (Typ)	W	EEC**
A40MET28W027	2700K	194	Wide 40°	440	700 mA	3,1V	2,2W	D
A40MET28W030	3000K	200	Wide 40°	470	700 mA	3,1V	2,2W	D
A40MET28W040	4000K	203	Wide 40°	480	700 mA	3,1V	2,2W	C
A40MET28W050	5000K	250	Wide 40°	520	700 mA	3,1V	2,2W	C
A40MET28M027	2700K	194	Medium 30°	595	700 mA	3,1V	2,2W	D
A40MET28M030	3000K	200	Medium 30°	640	700 mA	3,1V	2,2W	D
A40MET28M040	4000K	203	Medium 30°	660	700 mA	3,1V	2,2W	C
A40MET28M050	5000K	250	Medium 30°	740	700 mA	3,1V	2,2W	C

\*\* The EEC specification refers in each case to the installed light source(s)

### 🇮🇹 Spot a LED di potenza - 700mA

- Resa luminosa 194÷250 lumen
- Si monta in un foro Ø 28mm. Fissaggio con ghiera o a pressione con molla.
- Fornito con cavo da 0,25 m
- Lente sigillata con guarnizione anti-vapore
- Disponibile nei colori 2700K, 3000K, 4000K, 5000K e colorati.

### 🇬🇧 High Brightness LED spot - 700mA

- Light power 194÷250 lumen
- Assembly into a Ø 28mm hole. Fixing by shade ring or by pressure spring.
- Supplied with 0,25 m cable
- The optic is sealed by a steamproof gasket
- In standard selections 2700K, 3000K, 4000K, 5000K and coloured.