

3/4,6
Watt



IP 20

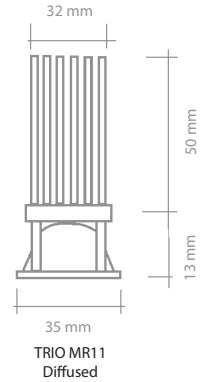
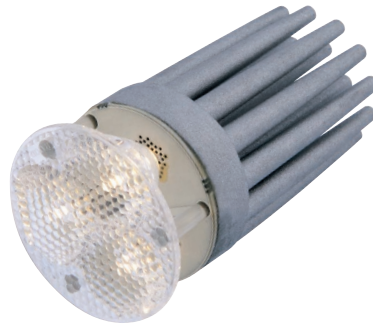
CRI>80



EMC



$t_a -20^{\circ} \div +40^{\circ}C$



Part Number	CCT (K)	Lumen Typ.	Beam	Lux @1m	I (Typ)	V (Typ)	W	Ø	Standard Size	EEC**
A40TR1127W00	2700K	357	Wide 40°	860/1060	350/500 mA	9,2V	3/4,6W	35 mm	MR11	D
A40TR1127M00	2700K	357	Medium 25°	1130/1530	350/500 mA	9,2V	3/4,6W	35 mm	MR11	D
A40TR1127N00	2700K	357	Narrow 12°	3580/4800	350/500 mA	9,2V	3/4,6W	35 mm	MR11	D
A40TR1130W00	3000K	370	Wide 40°	960/1280	350/500 mA	9,2V	3/4,6W	35 mm	MR11	D
A40TR1130M00	3000K	370	Medium 25°	1290/1720	350/500 mA	9,2V	3/4,6W	35 mm	MR11	D
A40TR1130N00	3000K	370	Narrow 12°	4150/5250	350/500 mA	9,2V	3/4,6W	35 mm	MR11	D
A40TR1140W00	4000K	390	Wide 40°	1040/1400	350/500 mA	9,2V	3/4,6W	35 mm	MR11	C
A40TR1140M00	4000K	390	Medium 25°	1390/1840	350/500 mA	9,2V	3/4,6W	35 mm	MR11	C
A40TR1140N00	4000K	390	Narrow 12°	4490/5660	350/500 mA	9,2V	3/4,6W	35 mm	MR11	C
A40TR1150W00	5000K	450	Wide 40°	1140/1480	350/500 mA	9,2V	3/4,6W	35 mm	MR11	C
A40TR1150M00	5000K	450	Medium 25°	1580/2080	350/500 mA	9,2V	3/4,6W	35 mm	MR11	C
A40TR1150N00	5000K	450	Narrow 12°	5420/7100	350/500 mA	9,2V	3/4,6W	35 mm	MR11	C

** The EEC specification refers in each case to the installed LED light source(s)

🇮🇹 Spot a LED di potenza - 3 x 350/500mA

- Si adatta a faretti per lampadina a incandescenza Ø 35mm
- Fornito con cavo da 50 cm
- Lente disponibile in tre differenti versioni: fascio stretto, medio e largo.
- Disponibile nei colori 2700K, 3000K, 4000K e 5000K

🇬🇧 High Brightness LED spot - 3 x 350/500mA

- Suitable for being built in standard Ø 35mm downlights
- Supplied with 50 cm cable
- Different lens degrees available: narrow, medium and wide beam.
- Available in standard colours 2700K, 3000K, 4000K e 5000K