

120/240
Watt

RF
2.4GHz

V
CV
↓

PF
 $\lambda \geq 0,6$

IP 20

CE

EMC

M

M

F

$t_a -20^\circ \div +40^\circ C$

45 mm



Centralina RF universale 2.4Ghz per RGB / RGBW Dimmer / CT

- Classe II di isolamento - Indipendente - IP20
- Controllo universale: RGB / RGBW / Dimmer /CT
- Alimentazione: 12÷24V DC
- Modalità Synchro RF max 10m

RF Universal Interface 2.4Ghz for RGB/RGBW/ Dimmer/CT

- Insulation class II - For independent mounting - IP20
- Control of RGB / RGBW / Dimmer/CT
- Input: 12÷24V DC
- Synchro Mode max 10m

RF Universal-Interface 2.4 Ghz für RGB / RGBW/ Dimmer / CT

- Isolationschutzklasse II - Unabhängiger Einsatz - IP20
- In 3 Ausführungen verfügbar: Dimmer, Steuerung der Farbtemperatur und RGB
- Speisung: 12÷24V DC
- Synchro Mode max 10m

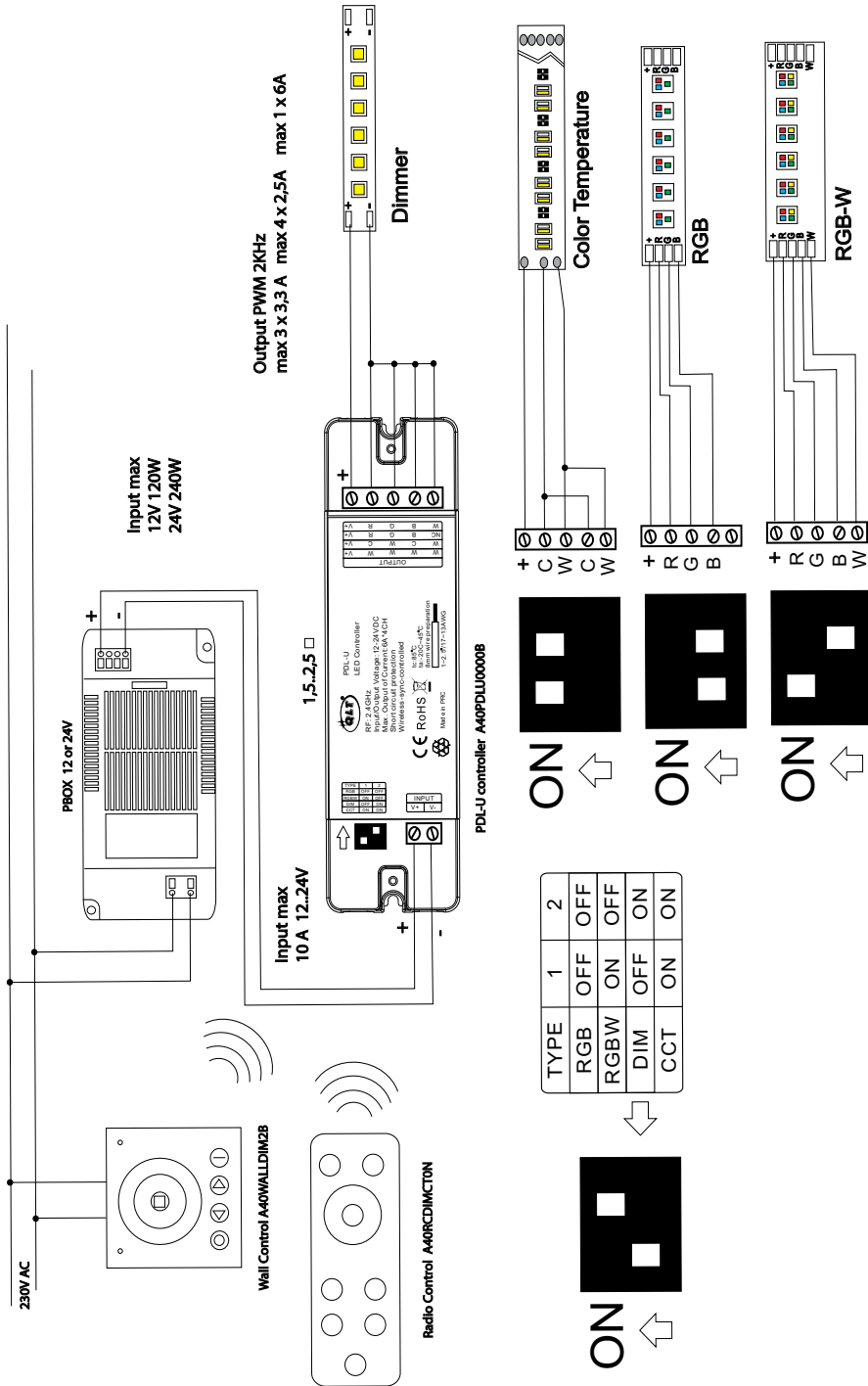
Centrale universelle RF 2.4Ghz avec sortie RGB/ RGBW/Dimmer/CT

- Classe II d'isolation - Indépendant - IP20
- Disponible en trois versions: RGB/RGBW/DIM/CT
- Alimentation: 12÷24V DC
- Modalité synchro max 10m

Controlador universal RF 2.4Ghz por RGB/RGBW/ Dimmer/CT

- Aislamiento Clase II - Independiente - IP20
- Disponible en tres versiones: dimmer, control de la temperatura del blanco y RGB
- Alimentación: 12÷24V DC
- Synchro mode RF max 10m.

Part number	Color	INPUT V		I Max	OUTPUT V Max	Watt	Dimensions A x B x C
		Min	Max				
A40PDLU0000B	RGB/RGBW/DIM/CT	12	24	4 x 2,5A	Vin -0.1V	120/240 W	163 x 46 x 25



Radio frequency controlled system

